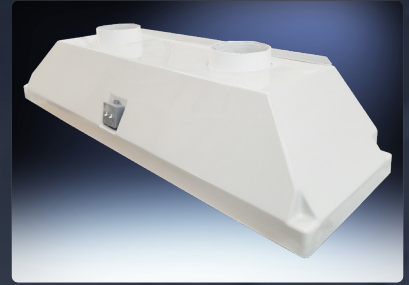


Canopy Hoods in Fiberglass or Stainless Steel



- Canopy Hoods
- Laboratory Ventilation



Wall Canopy



Island Canopy



Corner Canopy



Custom Canopy



HEMCO

Laboratory Planning Solutions

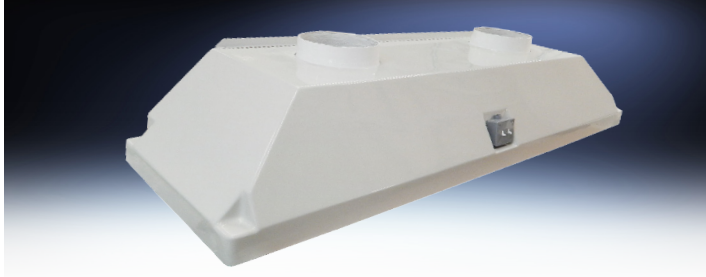
For Prompt
Service Call: (816) 796-2900

www.HEMCOcorp.com

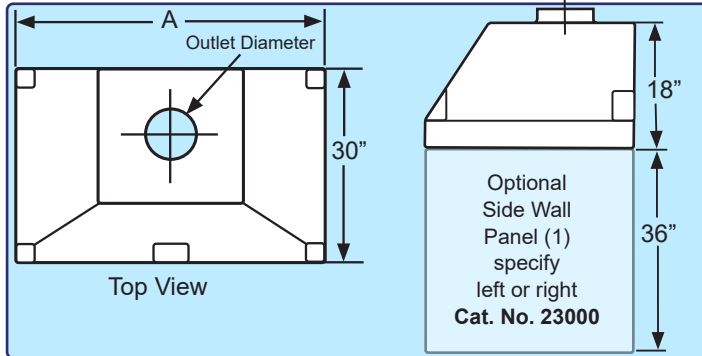
Canopy Hoods in Fiberglass or Stainless Steel

Canopy hoods are designed to collect and exhaust corrosive vapors, heat, steam, and odors when mounted over areas with water baths, hot plates, or portable equipment.

Fiberglass Wall Canopy



Fiberglass Canopy hoods are designed to collect and exhaust corrosive vapors, heat, steam, and odors when mounted over areas with water baths, hot plates, or portable equipment. Standard color: Silver Beige

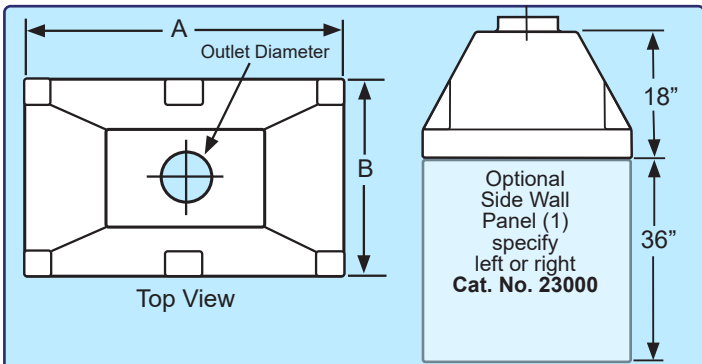


Side Wall Panels (fiberglass or stainless steel) kit includes one wall panel and hardware
Cat. No. 23000
 Vapor Proof Light & Switch **Cat. No. 50035**

Rear Wall Panel (consult factory for details)
Blower Switch 115V/15A
Cat. No. 50028

Width A	36"	48"	72"	96"	Side Wall Panels
Fiberglass Cat. No.	13030	13040	13060	13080	23000
Fiberglass Rear Wall Panel	23016	23026	23036	23046	--
Diameter D	6"	8"	10"	(2) 10"	--

Fiberglass Island Canopy



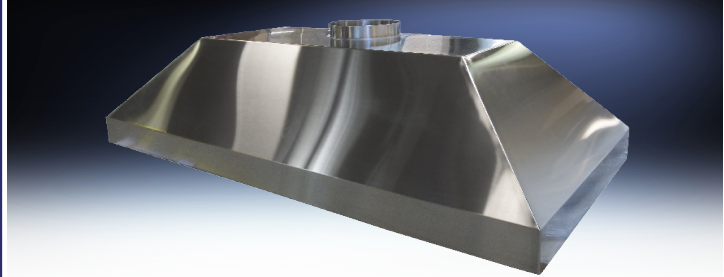
Suspended Island Canopy Hood Mounting Kit Includes all components to secure to ceiling including 6' long threaded rods.
Cat. No. 23001

Vapor Proof Light & Switch Cat. No. 50035 (consult chart for Cat. No.)

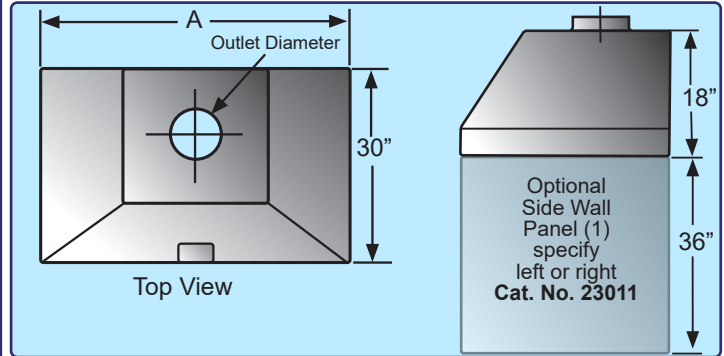
Side Wall Panels (fiberglass or stainless steel) kit includes one wall panel and hardware **Cat. No. 23000**
Rear Wall Panel

Width A	36"	48"	72"	96"	Side Wall Panels
Fiberglass Cat. No.	23030	23040	23060	23080	23000
Fiberglass Rear Wall Panel	23016	23026	23036	23046	--
Diameter D	6"	8"	10"	(2) 10"	--

Stainless Steel Wall Canopy



Stainless Steel Canopy hoods are constructed of type 304 stainless steel and designed to exhaust heat, steam when mounted over water baths, hot plates, or portable equipment. In sizes 36", 48", 72", 96" wide.

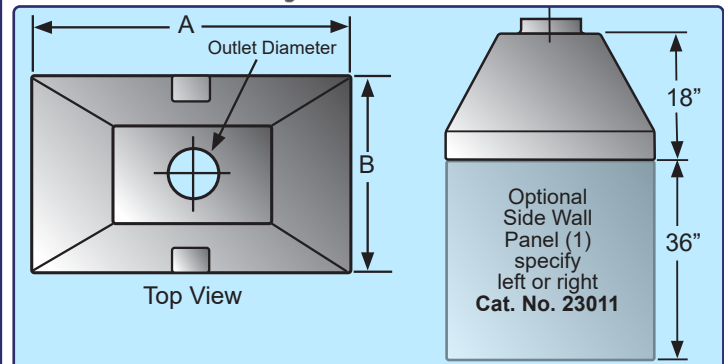


Side Wall Panels (fiberglass or stainless steel) kit includes one wall panel and hardware
Cat. No. 23000
 Vapor Proof Light & Switch **Cat. No. 50035**

Rear Wall Panel (consult factory for details)
Blower Switch 115V/15A
Cat. No. 50028

Width A	36"	48"	72"	96"	Side Wall Panels
Stainless Steel Cat No.	13130	13140	13160	13180	23011
Stainless Steel Rear Wall Panel	23116	23126	23136	23146	---
Diameter D	6"	8"	10"	(2) 10"	---

Stainless Steel Island Canopy



Suspended Island Canopy Hood Mounting Kit Includes all components to secure to ceiling including 6' long threaded rods. **Cat. No. 23001**

Vapor Proof Light & Switch Cat. No. 50027-2 (consult chart for Cat. No.)

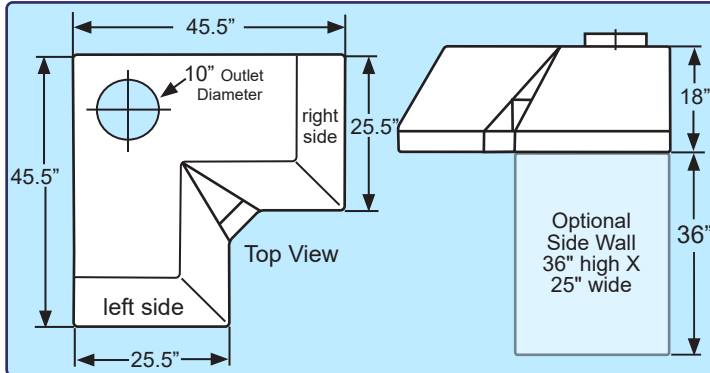
Side Wall Panels (fiberglass or stainless steel) kit includes one wall panel and hardware **Cat. No. 23000**
Blower Switch 115V/15A (blower not included) **Cat. No. 50027-2**

Width A	36"	48"	72"	96"	Side Wall Panels
Stainless Steel Cat No.	23130	23140	23160	23180	23011
Stainless Steel Rear Wall Panel	23116	23126	23136	23146	---
Diameter D	6"	8"	10"	(2) 10"	---

Canopy Hoods in Fiberglass or Stainless Steel

Canopy hoods can be used for storage of chemicals, freeing up space in fume hoods.

Corner Canopy (Fiberglass)



Corner Canopy Hood & Wall Mounting Kit
Includes all components to secure the canopy hood to a wall. **Cat. No. 13000**

Corner Composite Resin Worksurface
Comes dished to contain spillage. **Cat. No. 13503**

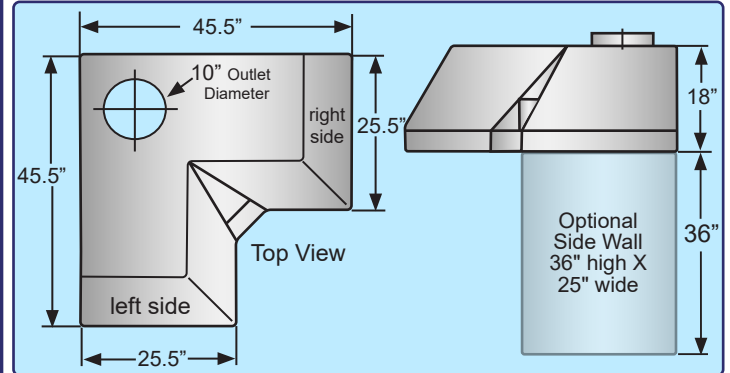
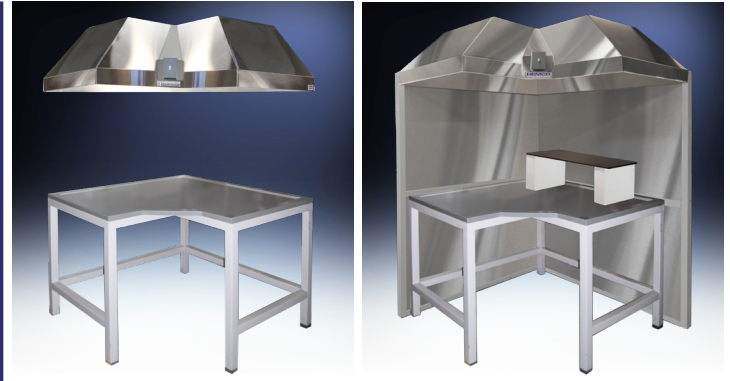
Corner Table Features welded steel construction **Cat. No. 13502**

Rear Wall Panel (2) required
Qty (1) 36" high X 45" wide **Cat. No. 23056**

Side Wall Panels (fiberglass) 36" h X 25" w, kit includes one wall panel and hardware **Cat. No. 23006**

Blower Switch 115V/15A **Cat. No. 50028**

Corner Canopy (Stainless Steel)



Corner Canopy Hood & Wall Mounting Kit
Includes all components to secure the canopy hood to a wall. **Cat. No. 13000**

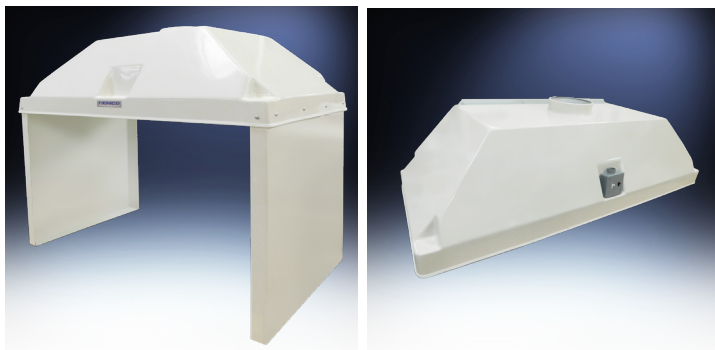
Corner Composite Resin Worksurface
Comes dished to contain spillage. **Cat. No. 13503**

Corner Table Features welded steel construction **Cat. No. 13502**

Side Wall Panels (stainless steel) 36" h X 25" w, kit includes one wall panel and hardware **Cat. No. 23004**

Blower Switch 115V/15A **Cat. No. 50027-2**

Custom Fiberglass Canopy Hoods



Canopy with (2) side walls, for access from both sides.

Canopy with wall mounting brackets.



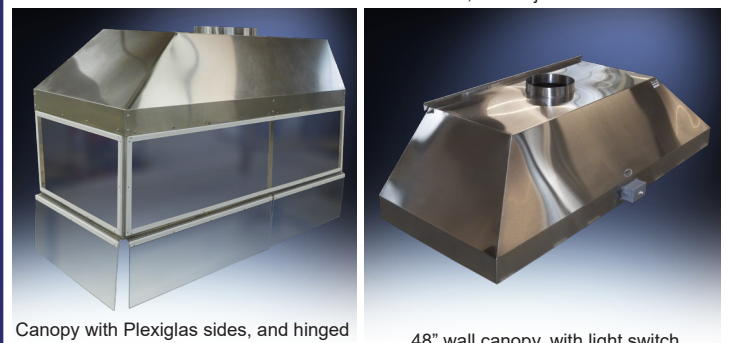
Corner Canopy with light, side walls and corner table unit.

Custom Stainless Steel Canopy Hoods



Canopy with (2) side walls, for access from both sides.

Canopy with rear and side walls, work surface, and adjustable table.



Canopy with Plexiglas sides, and hinged access panels.

48" wall canopy, with light switch.

Canopy Hood Accessories

Incandescent Vapor Proof light fixture
Factory wired with switch and junction box. All components are U.L. listed.



Cat. No. 50035

Heavy Duty Vinyl Corner Canopy Walls
reduce cross drafts and turbulence that hamper hood efficiency. Available in solid curtains or strips.



Cat. No. 23007

Canopy Hoods light switches

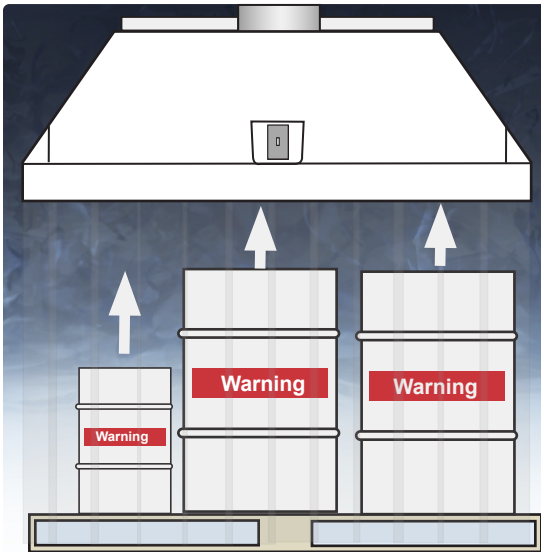
Wall Canopy Blower Switch
Cat. No. 50028
(blower not included)



Island / Corner Canopy Blower & Light Switch
Cat. No. 50027-2
(blower not included)



Canopy Hood Air Curtains & Side Walls



- Side and Rear Wall Panels - Fiberglass panels are designed to contain spillage and block cross drafts

Cat. No.

- Side and Rear Wall Air Curtains - frosted vinyl strip curtains block cross drafts

Cat. No.



Canopy Hoods Tables

Corner Canopy Table
height is 35 inches Features welded steel construction, with chemical resistant powder coat finish
Cat. No. 13502



Island Table
height is 35 inches
Features welded steel construction, with chemical resistant powder coat finish



Cat. No.

Canopy Hood Ducting & Exhaust System

Ductwork connected to canopy hoods may be arranged in a variety of patterns depending on requirements. Generally, the best exhaust system involves the shortest duct length and the fewest elbows. Duct size, length, and number of elbows affect static pressure loss and blower efficiency. Ideally, each fume hood should have its own ducting and blower to maximize hood flexibility and reduce danger of backdraft from other hoods.

Common or manifold ductwork designs can be used, provided duct and blower have been sized properly. In these designs, individual hood dampers are recommended to balance the system. Hood users must be aware of

how different hood exhaust fumes will react when mixed in the ductwork. Rigid PVC ductwork is recognized as an excellent fume hood exhaust duct material. The smooth interior surface reduces static pressure loss and chemical waste build up, and PVC is extremely resistant to a wide variety of reagents. For some applications flexible PVC lined duct provides adequate service and can significantly reduce installation costs. When planning exhaust ducting, duct size, length, number of bends, and exhaust material must be considered.

Canopy hoods exhaust large quantities of laboratory air, and to work properly a similar quantity of fresh air must be supplied to the room.

Airflow Monitor Note: OSHA recommends Airflow Monitors to ensure user protection.

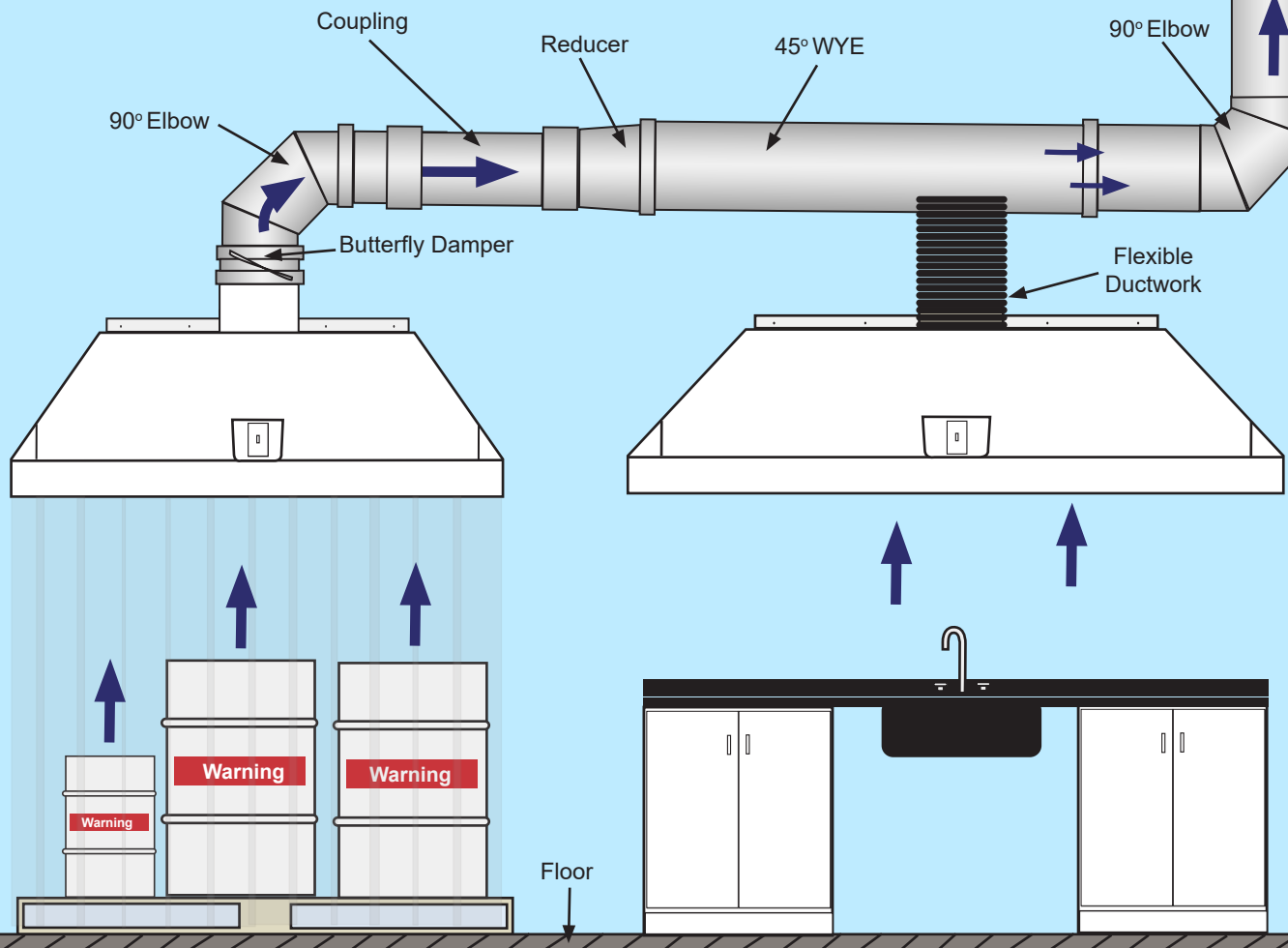
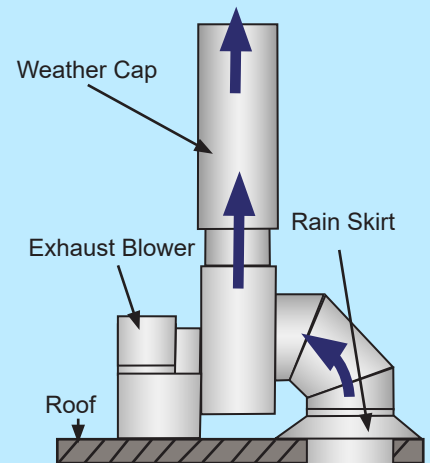
Continuously monitors face velocity airflow of fume hood. Select and calibrate at desired fpm velocity set point. If the hood face velocity falls below set point, an audible alarm sounds and a visual red indicator light appears. Airflow alarm is factory installed or can be field installed. 115V/60Hz AC.

Cat. No. 51403



Continuously monitors face velocity airflow of fume hood. A digital display of face velocity in m/sec or fpm that indicates safety reading with an audible alarm. Push button calibration and 3 programmable input/output relays. Factory installed or can be field installed.

Cat. No. 51410



Fume Hood Exhaust Blowers Ordering Info

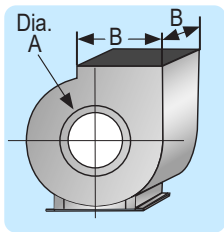
A complete line of belt and direct drive exhaust blowers that are chemical resistant & available in standard and explosion-proof models. HEMCO blowers are designed to operate effectively and efficiently to remove noxious & hazardous fumes. Standard 115V 60Hz & international electrical configuration of 220V 50Hz AC available.

Blower Recommendations

- Blowers should be mounted on the roof in-order that the ducting leading to the blower inlet is under negative static pressure. If exhaust blowers are mounted inside the building, all ducting connected to the blower outlet will be under positive static pressure, if a leak were to develop in the section of the duct inside the building, toxic and or hazardous fumes could be forced out of the ductwork and into that area of the building.
 - To achieve the lowest practical noise level in the exhaust system, we suggest that the following measurements be used when there is no conflict with other specifications of the system:
 - Use vibration isolators or mounting blower exhaust assembly.
 - Install a blower fan that will deliver the correct CFM and static pressure with the lowest practical impeller wheel RPM. If possible, use a duct size large enough to keep duct velocity under 1800 FPM velocity.
 - Use a flexible connection at the fan inlet to isolate mechanical transmission of noise from the ducting between the hood and the exhaust blower.
 - Exhaust blower system should be designed with the fewest possible elbows or other fittings. Use radius type elbows & avoid using square elbows. Use gradual tapered transitions where necessary, & avoid abrupt changes in configuration or cross sectional area.
 - When ordering an exhaust blower, specify the orientation of discharge desired. Vertical up blast discharge is the most common and will be supplied unless otherwise specified.
 - All fans are shipped with clockwise rotation when viewed from the motor end of the assembly.
 - For normal usage, the standard for both the blower housing and impeller wheel is epoxy coated.
 - Blowers used for hood exhaust at altitudes above 1,000 feet, may require a correction factor to provide the correct CFM and static pressure.
- Contact factory for details relating to your specific application.**

Epoxy Coated Steel Belt Drive Blowers

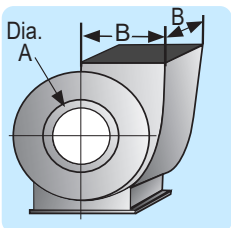
Standard (STD) belt drive steel blower and impeller wheel are epoxy coated for superior chemical resistance. Explosion-proof blowers (EXP) have epoxy coated, non-sparking aluminum impeller wheel. V-belt drive and adjustable pulleys permit field balancing. Seven discharge positions to suit installation. Weather housing is furnished. Motor has thermal overload protection. Specify: 115V single phase, 230V single phase, 230/460V three phase or 208V(consult factory). 1 year manufacturer's warranty



Catalog Number and Static Pressure														
cfm	A Inlet Diameter	B Outlet Size	1/2" Static Pressure			3/4" Static Pressure			1" Static Pressure			1 1/2" Static Pressure		
			HP	STD	EXP	HP	STD	EXP	HP	STD	EXP	HP	STD	EXP
296	8 7/8"	10 1/8" x 4 1/8"	1/4	51701	51801	1/4	51702	51802	1/4	51703	51803	1/4	51704	51804
474	8 7/8"	10 1/8" x 4 1/8"	1/4	51705	51805	1/4	51706	51806	1/4	51707	51807	1/2	51708	51808
652	8 7/8"	10 1/8" x 6 3/8"	1/2	51709	51809	1/2	51710	51810	1/2	51711	51811	1/2	51712	51812
800	8 7/8"	10 1/8" x 6 3/8"	1/2	51713	51813	1/2	51714	51814	1/2	51715	51815	3/4	51716	51816
914	9 7/8"	11 1/2" x 8 1/4"	1/2	51717	51817	3/4	51718	51818	—	—	—	—	—	—
1044	9 7/8"	11 1/2" x 8 1/4"	1/2	51719	51819	1/2	51720	51820	1/2	51721	51821	—	—	—
1175	9 7/8"	11 1/2" x 8 1/4"	1/2	51722	51822	1/2	51723	51823	3/4	51724	51824	—	—	—
1240	9 7/8"	11 1/2" x 8 1/4"	1/2	51725	51825	1/2	51726	51826	3/4	51727	51827	3/4	51728	51828
1240	11 7/8"	13 3/8" x 8 1/4"	1/3	51729	51829	1/2	51730	51830	—	—	—	—	—	—
1506	11 7/8"	13 3/8" x 8 1/4"	3/4	51731	51831	3/4	51732	51832	3/4	51733	51833	—	—	—
1771	11 7/8"	13 3/8" x 8 1/4"	1	51734	51834	1	51735	51835	1	51736	51836	1 1/2	51737	51837

Epoxy Coated Steel Direct Drive Blowers

Direct drive steel blower and impeller wheel are epoxy coated for superior chemical resistance. Explosion proof blowers have epoxy coated non-sparking aluminum impeller wheels. Motor is 115V, single phase and has thermal overload protection. 1 year manufacturer's warranty



Catalog Number and Static Pressure								
A Inlet Diameter	B Outlet Size	HP	STD	EXP	1/4" SP	1/2" SP	3/4" SP	1" SP
					Free Air CFM	Free Air CFM	Free Air CFM	Free Air CFM
6"	7" X 4-3/8"	1/6	51177	51178	565	515	440	300
8"	8-3/4" X 5-7/16"	1/3	51179	51180	935	875	800	712
9"	10-1/8" X 4-1/8"	1/2	51181	51182	1050	980	920	850
9"	10-1/8" X 5-1/8"	3/4	51183	51184	1260	1220	1180	1100

Standard motors are 115V / 60Hz / 1 phase. Explosion proof motors are 115/230V, 60Hz, 1 phase. Other voltage, hertz, and phase motors are available.

Fume Hood Exhaust Blowers Ordering Info

HEMCO offers a complete line of chemical resistant non-metallic exhaust blowers in belt drive or direct drive options in standard or explosion proof models. Ideal for applications where corrosion resistance is critical. These blowers are available in polypropylene or fiberglass construction.

Blower Recommendations

1. It is recommended that exhaust blowers be located at the end of the ducting which is typically roof mounted. This ensures a negative pressure through out the ventilation system. However for applications where the duct is going directly out through a wall above a fume hood, one option is to have a fiberglass direct drive blower installed in the top of the fume hood. By having the blower internally mounted, the installation is simplified and convenient for duct connection and servicing. However there would be an airflow sound element associated to having the blower hood mounted.
2. By keeping the exhaust duct as short and as straight as possible, the total resistance will be reduced and by keeping the diameter of the duct correctly sized to the flow volume, noise and static pressure can be reduced.
3. Blower wheels for polypropylene and fiberglass blowers are polypropylene.
4. Vibration isolators are recommended when mounting the blower assemblies
5. HEMCO recommends that a sash stop be installed on the fume hood to limit the sash height for operation. By having stop at a half open position, the total CFM can be reduced by 50%; thus by reducing the volume, energy loss, duct diameter, motor and blower size, and sound is reduced.

UniFlow SE & LE Fume Hoods			
Hood Width	Hood Depth	Full Open CFM	1/2 Open CFM
36"	30"	438	241
48"	30"	772	385
60"	30"	938	474
72"	30"	1162	592
96"	30"	1613	800
UniFlow CE Fume Hoods			
Hood Width	Hood Depth	Full Open CFM	1/2 Open CFM
30"	24"	378	189
36"	24"	460	230
48"	24"	654	327
72"	24"	960	480

Blower Description

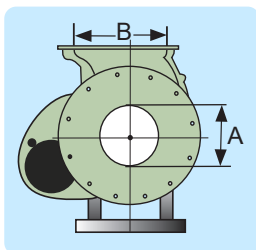
- CFM at 100 FPM face velocity
- Housing is constructed of either molded composite or polypropylene for chemical resistance.
- Flange inlet collars enable easy connection to ductwork.
- Wheel is dynamically balanced to minimize noise and increase efficiency.
- Belt drive models have Ball bearing pillow blocks which are pre-lubricated and resistant to both moisture and dirt.
- Shaft is constructed of polished steel with a coating to prevent rust and corrosion.
- Motors meet NEMA standards for single speed motors.
- These blowers are ideally suited for both supply and exhaust applications in laboratories, educational, pharmaceutical, industrial, and other applications.

Polypropylene Belt Drive Blowers



High efficiency impellers produce low power consumption, reduced operating costs and quiet operation. 20 forward curved blades, in fire retardant polypropylene. Non-static and oil resistant V-belt, cast iron pulleys, adjustable pulleys available, adjustment for tensioning and belt replacement. 230V explosion proof, non sparking, chemical resistant for hostile or hazardous environments. 115V single phase or three phase.

Non-static and oil resistant V-belt, cast iron pulleys, adjustable pulleys available, adjustment for tensioning and belt replacement. 1 year manufacturer's warranty



Catalog Number and Static Pressure											
Free Air CFM	A Inlet Diameter	B Outlet Diameter	0.5" Static Pressure HP			0.75" Static Pressure HP			1.0" Static Pressure HP		
			HP	STD	EXP	HP	STD	EXP	HP	STD	EXP
400	6"	6"	1/4	51450	51850	1/4	51460	51860	1/4	51470	51870
800	8"	8"	1/4	51451	51851	1/3	51461	51861	1/3	51471	51871
1000	8"	8"	1/2	51452	51852	1/2	51462	51862	1/2	51472	51872
1200	10"	10"	1/2	51453	51853	1/2	51463	51863	1/2	51473	51873
1600	10"	10"	1	51754	51854	1	51464	51864	1	51474	51874

**Most Extensive Line of Laboratory Fume Hoods in the Industry
Reduce Energy costs up to 50% with HEMCO Sash Management 1-2-3,
which provides maximum energy efficiency and user protection.**



UniFlow

Laboratory Fume Hoods are available in

1. Constant Air Volume CAV Air Bypass
2. Variable Air Volume VAV Restricted Bypass
3. Explosion Proof models for Hazardous Locations
4. CE models for International Electronic Configurations

Standard Bench Mount and Floor Mount hoods with over 40 standard sizes and custom sizes to your specs. UniFlow Superstructure exclusive unitized dual wall construction for total chemical resistance, strength, and durability. Performance tested to ASHRAE 110 - 1995. U.L.1805 Classified for Fume Hoods & Cabinets, and SEFA1 Recommended Practices for Fume Hoods.



Request a free brochure At www.HEMCOcorp.com and browse the entire selection of HEMCO Laboratory Equipment



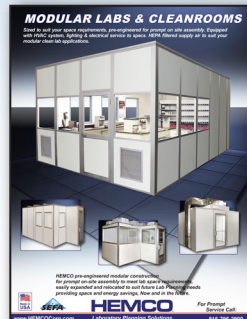
Lab Planning Solutions
Complete Laboratory
Planning Guide



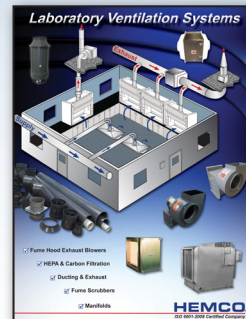
UniMax Large
Floor Mount Walk-In
Fume Hoods Brochure



EnviroMax Enclosures for
Robotic and Automated
Lab Processes



Modular Clean Labs
& Quality Control Labs
Brochure



Laboratory
Ventilation
Brochure



Find our products with ARCAT.com

HEMCO Corporation
711 S. Powell Road
Independence, MO 64056
UFC-09.26

HEMCO

Laboratory Planning Solutions

**Specify UniFlow Fume Hoods
on Your Next Lab Project**

www.HEMCOcorp.com